

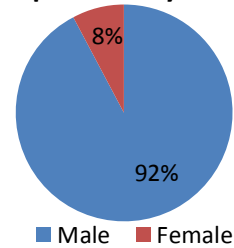


Population Summary

Eden, Yazoo County, Mississippi

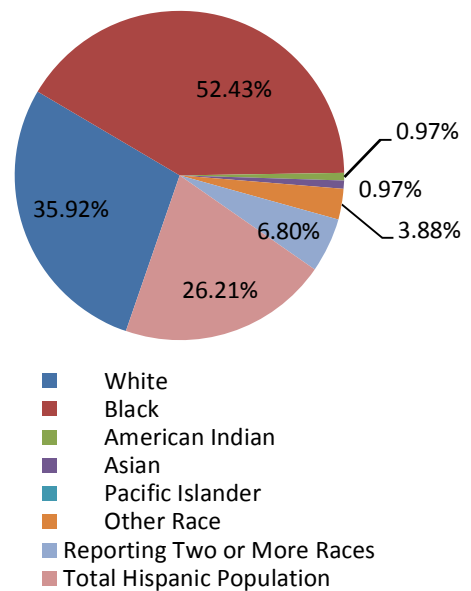
Population by Race	Number	Percent	Median Age	Total Population
Reporting One Race	97	94.17%	---	2000 67
White	37	35.92%	45.2	2010 103
Black	54	52.43%	29.7	Annual Rate (%) 4.39
American Indian	1	0.97%	32.9	
Asian	1	0.97%	29.9	
Pacific Islander	0	0.00%	27.5	
Other Race	4	3.88%	25.5	
Reporting Two or More Races	7	6.80%	20.0	
Total Hispanic Population	27	26.21%	25.9	

Population by Sex

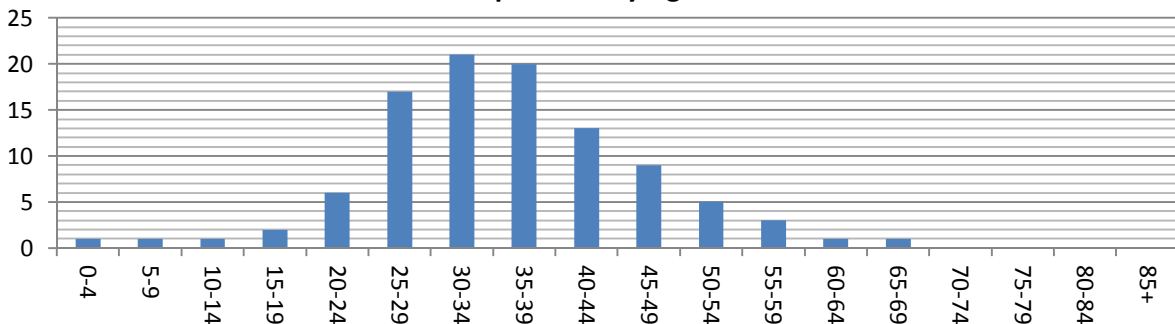


Population by Age	Number	Percent
0-4	1	0.97%
5-9	1	0.97%
10-14	1	0.97%
15-19	2	1.94%
20-24	6	5.83%
25-29	17	16.50%
30-34	21	20.39%
35-39	20	19.42%
40-44	13	12.62%
45-49	9	8.74%
50-54	5	4.85%
55-59	3	2.91%
60-64	1	0.97%
65-69	1	0.97%
70-74	0	0.00%
75-79	0	0.00%
80-84	0	0.00%
85+	0	0.00%
18+	98	95.15%
65+	1	0.97%

Population by Race



Population by Age



Data Note: Hispanic population can be of any race. Census 2010 medians are computed from reported data distributions.
Source: U.S. Census Bureau, Census 2010 Summary File 1. Esri converted Census 2000 data into 2010 geography.

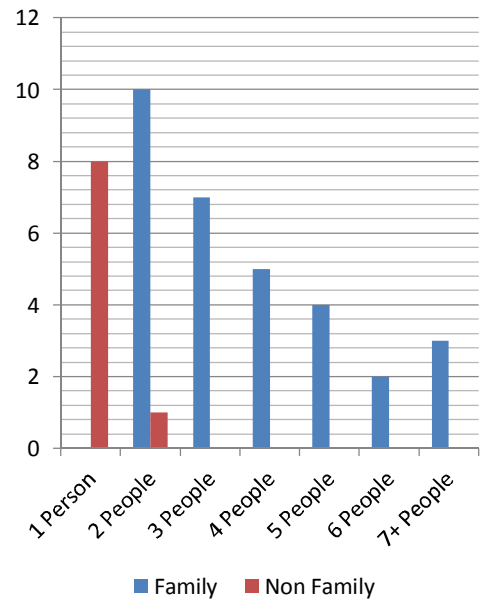


Household Summary

Eden, Yazoo County, Mississippi

Households by Type	Number	Percent	Total Households	
Households with 1 Person	8	20.5%	2000	48
Households with 2+ People	30	76.9%	2010	39
Family Households	29	74.4%	Annual Rate (%)	-2.06%
Husband-wife Families	12	30.8%	Average Size	1.00
With Own Children	6	15.4%		
Other Family (No Spouse Present)	17	43.6%		
With Own Children	8	20.5%		
Nonfamily Households	1	2.6%		
All Households with Children	18	46.2%		
Multigenerational Households	4	10.3%		
Unmarried Partner Households	3	7.7%		
Male-female	3	7.7%		
Same-sex	0	0.0%		

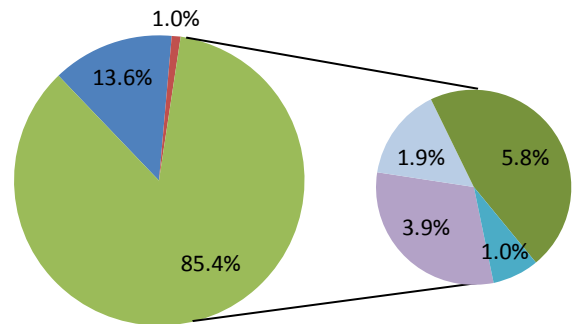
Households by Size



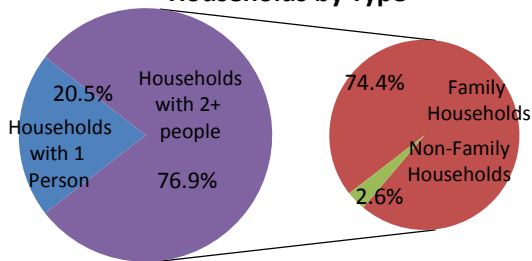
Population by Relationship and Household Type		
Total	103	100.0%
In Households	15	14.6%
In Family Households	14	13.6%
Householder	4	3.9%
Spouse	2	1.9%
Child	6	5.8%
Other relative	0	0.0%
Nonrelative	1	1.0%
In Nonfamily Households	1	1.0%
In Group Quarters	88	85.4%
Institutionalized Population	88	85.4%
Noninstitutionalized	0	0.0%

Households by Size	Family		Non Family	
	Number	Percent	Number	Percent
Total	31	100.0%	9	100.0%
1 Person	---		8	88.9%
2 People	10	32.3%	1	11.1%
3 People	7	22.6%	0	0.0%
4 People	5	16.1%	0	0.0%
5 People	4	12.9%	0	0.0%
6 People	2	6.5%	0	0.0%
7+ People	3	9.7%	0	0.0%
Average Size	1.00		1.00	

Population by Relationship and Household Type



Households by Type



- In Family Households
- In Nonfamily Households
- Institutionalized Population
- Noninstitutionalized Population

- | In Family Households | |
|----------------------------------------------------------|--|
| ■ Householder | |
| ■ Spouse | |
| ■ Child | |
| ■ Other relative | |
| ■ Nonrelative | |

Data Note: Households with children include any households with people under age 18, related or not. Multigenerational households are families with 3 or more parent-child relationships. Unmarried partner households are usually classified as nonfamily households unless there is another member of the household related to the householder. Multigenerational and unmarried partner households are reported only to the tract level. Esri estimated block group data, which is used to estimate polygons or non-standard geography. Average family size excludes nonrelatives.

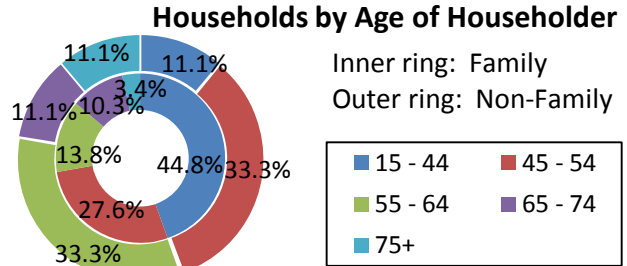
Source: U.S. Census Bureau, Census 2010 Summary File 1.



Householder Summary

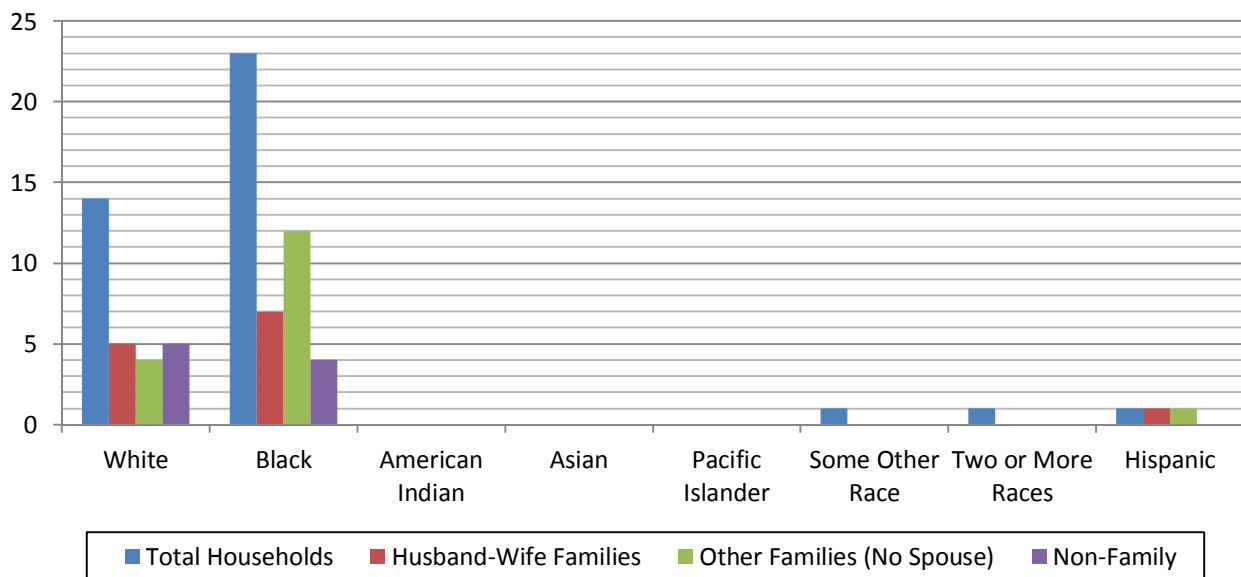
Eden, Yazoo County, Mississippi

Households by Age of Householder				
	Family		Non-Family	
	Number	Percent	Number	Percent
Total	29	100.0%	9	100.0%
15 - 44	13	44.8%	1	11.1%
45 - 54	8	27.6%	3	33.3%
55 - 64	4	13.8%	3	33.3%
65 - 74	3	10.3%	1	11.1%
75+	1	3.4%	1	11.1%



Summary by Race of Householder	Total Households		Husband-Wife Families		Other Families (No Spouse)		Non-Family	
	Number	Percent	Number	Percent	Number	Percent	Number	Percent
Total	39	100.0%	12	100.0%	16	100.0%	9	100.0%
White	14	35.9%	5	41.7%	4	25.0%	5	55.6%
Black	23	59.0%	7	58.3%	12	75.0%	4	44.4%
American Indian	0	0.0%	0	0.0%	0	0.0%	0	0.0%
Asian	0	0.0%	0	0.0%	0	0.0%	0	0.0%
Pacific Islander	0	0.0%	0	0.0%	0	0.0%	0	0.0%
Some Other Race	1	2.6%	0	0.0%	0	0.0%	0	0.0%
Two or More Races	1	2.6%	0	0.0%	0	0.0%	0	0.0%
Hispanic	1	2.6%	1	8.3%	1	6.3%	0	0.0%

Race of Householder



Data Note: Hispanic population can be of any race. Census 2010 medians are computed from reported data distributions.
Source: U.S. Census Bureau, Census 2010 Summary File 1. Esri converted Census 2000 data into 2010 geography.



Housing Unit Summary

Eden, Yazoo County, Mississippi

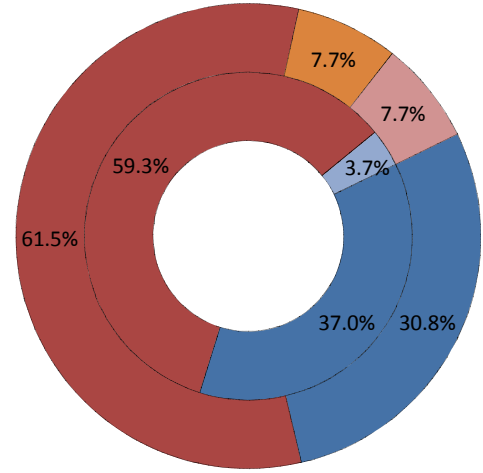
Total Housing Units	
2000	44
2010	43
Annual Rate (%)	-0.23

Total Housing Units by Occupancy		Number	Percent
Occupied Housing Units		39	90.7%
Vacant Housing Units			
For Rent		2	4.65%
Rented, not Occupied		0	0.00%
For Sale Only		1	2.33%
Sold, not Occupied		0	0.00%
For Seasonal/Recreational/Occasional Use		0	0.00%
For Migrant Workers		1	2.33%
Other Vacant		5	11.63%
Total Vacancy Rate (%)			20.9%

Households by Tenure and Mortgage Status	Number	Percent	Average Household Size
Total	39	100.0%	
Owner Occupied	27	69.2%	1.00
Owned with a Mortgage/Loan	15	38.5%	
Owned Free and Clear	11	28.2%	
Renter Occupied	12	30.8%	1.00

Housing Units by Race of Householder	Owner Occupied		Renter Occupied	
	Number	Percent	Number	Percent
Total	27	100.0%	13	100.0%
White	10	37.0%	4	30.8%
Black	16	59.3%	8	61.5%
American Indian	0	0.0%	0	0.0%
Asian	0	0.0%	0	0.0%
Pacific Islander	0	0.0%	0	0.0%
Some Other Race	0	0.0%	1	7.7%
Two or More Races	1	3.7%	0	0.0%
Hispanic	0	0.0%	1	7.7%

Housing Units by Race of Householder



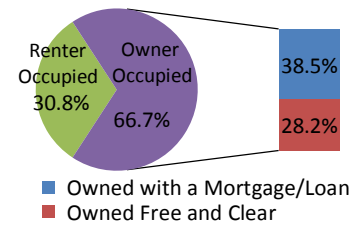
Inner ring: Owner Occupied
Outer ring: Renter Occupied

- White
- Black
- American Indian
- Asian
- Pacific Islander
- Some Other Race
- Two or More Races
- Hispanic

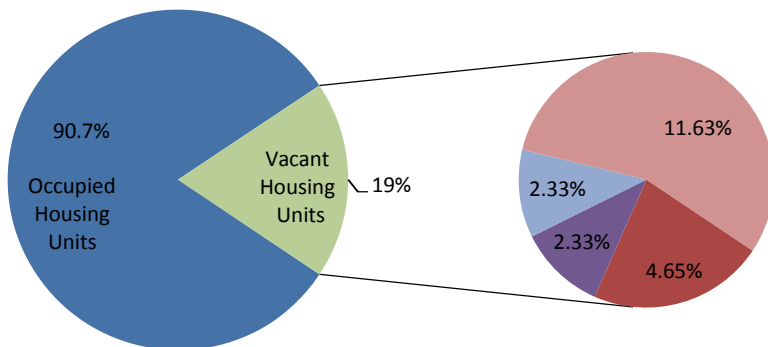
Average Household Size

Total	1.00
White	1.00
Black	1.00
American Indian	0.00
Asian	0.00
Pacific Islander	0.00
Some Other Race	1.00
Two or More Races	1.00
Hispanic	1.00

Households by Tenure and Mortgage Status



Total Housing Units by Occupancy



- For Rent
- Rented, not Occupied
- For Sale Only
- Sold, not Occupied
- For Seasonal/Recreational/Occasional Use
- For Migrant Workers
- Other Vacant

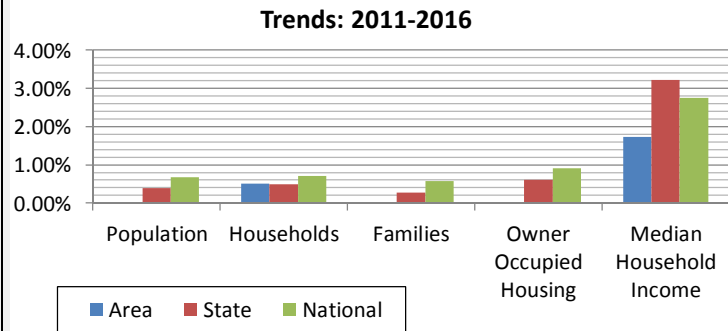
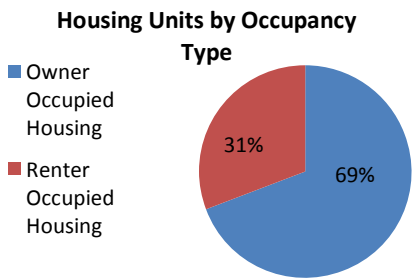
Data Note: Hispanic population can be of any race. Census 2010 medians are computed from reported data distributions.
Source: U.S. Census Bureau, Census 2010 Summary File 1. Esri converted Census 2000 data into 2010 geography.



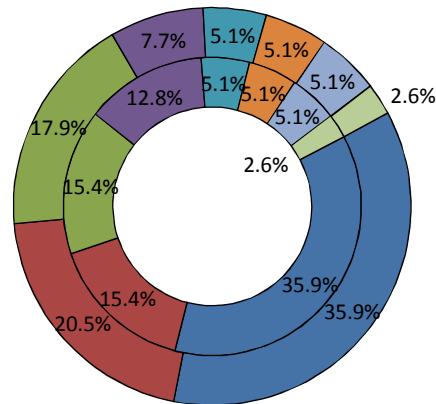
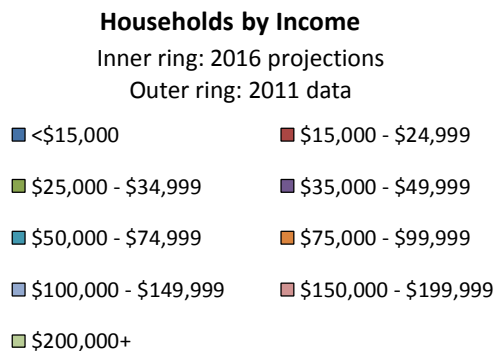
Demographic and Income Projections

Eden, Yazoo County, Mississippi

Summary	2010	2011	2016	Trends 2011-2016 Rate		
				Area	State	National
Population	103	103	103	0.00%	0.39%	0.67%
Households	39	39	40	0.51%	0.49%	0.71%
Families	29	29	29	0.00%	0.27%	0.57%
Average Household	1.00	1.00	1.00	-	-	-
Owner Occupied Housing	27	27	27	0.00%	0.60%	0.91%
Renter Occupied Housing	12	12	12	-	-	-
Median Age	35.4	35.4	35.4	-	-	-
Median Household Income	-	\$20,846	\$22,711	1.73%	3.22%	2.75%



Households by Income	2011		2016	
	Number	Percent	Number	Percent
<\$15,000	14	35.9%	14	35.9%
\$15,000 - \$24,999	8	20.5%	6	15.4%
\$25,000 - \$34,999	7	17.9%	6	15.4%
\$35,000 - \$49,999	3	7.7%	5	12.8%
\$50,000 - \$74,999	2	5.1%	2	5.1%
\$75,000 - \$99,999	2	5.1%	2	5.1%
\$100,000 - \$149,999	2	5.1%	2	5.1%
\$150,000 - \$199,999	0	0.0%	0	0.0%
\$200,000+	1	2.6%	1	2.6%
Median Household Income	\$20,846		\$22,711	
Average Household Income	\$36,935		\$44,843	
Per Capita Income	\$12,978		\$13,681	



Data Note: Income is expressed in current dollars.

Source: U.S. Census Bureau, Census 2010 Data. Esri forecasts for 2011 and 2016.

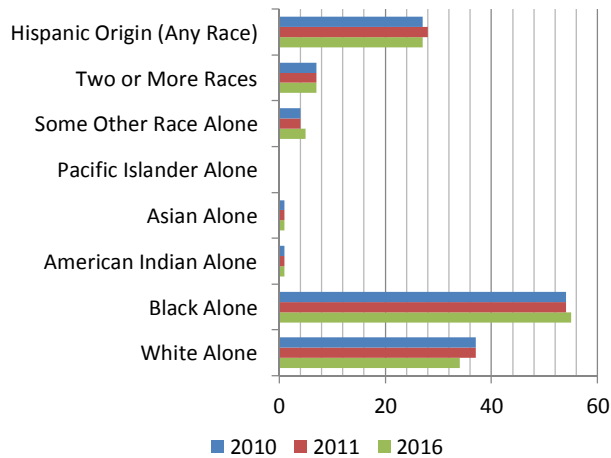


Population Summary and Projections

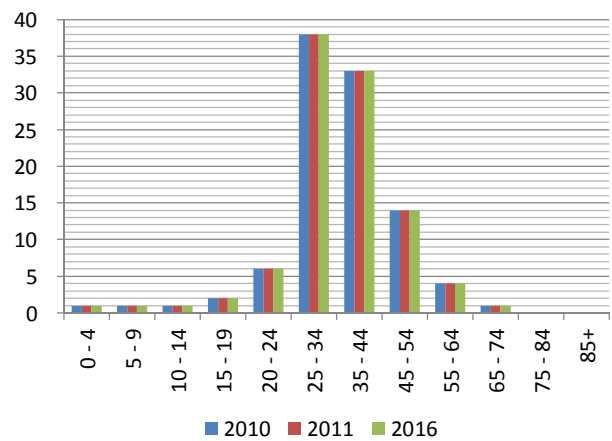
Eden, Yazoo County, Mississippi

Population	2010		2011		2016	
	103		103		103	
Population by Age	Number	Percent	Number	Percent	Number	Percent
0 - 4	1	1.0%	1	1.0%	1	1.0%
5 - 9	1	1.0%	1	1.0%	1	1.0%
10 - 14	1	1.0%	1	1.0%	1	1.0%
15 - 19	2	1.9%	2	1.9%	2	1.9%
20 - 24	6	5.8%	6	5.8%	6	5.8%
25 - 34	38	36.9%	38	36.9%	38	36.9%
35 - 44	33	32.0%	33	32.0%	33	32.0%
45 - 54	14	13.6%	14	13.6%	14	13.6%
55 - 64	4	3.9%	4	3.9%	4	3.9%
65 - 74	1	1.0%	1	1.0%	1	1.0%
75 - 84	0	0.0%	0	0.0%	0	0.0%
85+	0	0.0%	0	0.0%	0	0.0%
Race and Ethnicity						
White Alone	37	35.9%	37	35.9%	34	33.0%
Black Alone	54	52.4%	54	52.4%	55	53.4%
American Indian Alone	1	1.0%	1	1.0%	1	1.0%
Asian Alone	1	1.0%	1	1.0%	1	1.0%
Pacific Islander Alone	0	0.0%	0	0.0%	0	0.0%
Some Other Race Alone	4	3.9%	4	3.9%	5	4.9%
Two or More Races	7	6.8%	7	6.8%	7	6.8%
Hispanic Origin (Any Race)	27	26.2%	28	27.2%	27	26.2%


Race and Ethnicity



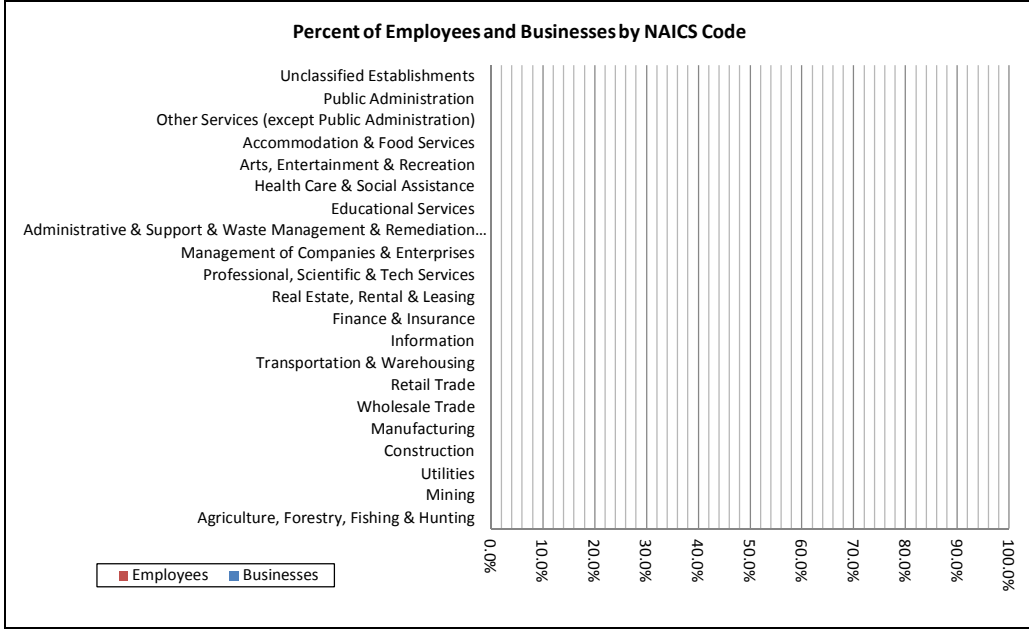
Population by Age



Source: U.S. Census Bureau, Census 2010 Data. Esri forecasts for 2011 and 2016.

	Business Summary by NAICS Codes Eden, Yazoo County, Mississippi
-----------------------------------------------------------------------------------	---------------------------------------------------------------------------

Total Businesses	0			
Total Employees	0			
Total Residential Population	181			
Employee/Residential Population Ratio	0.00			
NAICS Codes	Businesses		Employees	
	Number	Percent	Number	Percent
Agriculture, Forestry, Fishing & Hunting	0	#DIV/0!	0	#DIV/0!
Mining	0	#DIV/0!	0	#DIV/0!
Utilities	0	#DIV/0!	0	#DIV/0!
Construction	0	#DIV/0!	0	#DIV/0!
Manufacturing	0	#DIV/0!	0	#DIV/0!
Wholesale Trade	0	#DIV/0!	0	#DIV/0!
Retail Trade	0	#DIV/0!	0	#DIV/0!
Motor Vehicle & Parts Dealers	0	#DIV/0!	0	#DIV/0!
Furniture & Home Furnishings Stores	0	#DIV/0!	0	#DIV/0!
Electronics & Appliance Stores	0	#DIV/0!	0	#DIV/0!
Bldg Material & Garden Equipment & Supplies Dealers	0	#DIV/0!	0	#DIV/0!
Food & Beverage Stores	0	#DIV/0!	0	#DIV/0!
Health & Personal Care Stores	0	#DIV/0!	0	#DIV/0!
Gasoline Stations	0	#DIV/0!	0	#DIV/0!
Clothing & Clothing Accessories Stores	0	#DIV/0!	0	#DIV/0!
Sport Goods, Hobby, Book, & Music Stores	0	#DIV/0!	0	#DIV/0!
General Merchandise Stores	0	#DIV/0!	0	#DIV/0!
Miscellaneous Store Retailers	0	#DIV/0!	0	#DIV/0!
Nonstore Retailers	0	#DIV/0!	0	#DIV/0!
Transportation & Warehousing	0	#DIV/0!	0	#DIV/0!
Information	0	#DIV/0!	0	#DIV/0!
Finance & Insurance	0	#DIV/0!	0	#DIV/0!
Central Bank/Credit Intermediation & Related Activities	0	#DIV/0!	0	#DIV/0!
Securities, Commodity Contracts & Other Financial Investments & Other Related Activities	0	#DIV/0!	0	#DIV/0!
Insurance Carriers & Related Activities; Funds, Trusts & Other Financial Vehicles	0	#DIV/0!	0	#DIV/0!
Real Estate, Rental & Leasing	0	#DIV/0!	0	#DIV/0!
Professional, Scientific & Tech Services	0	#DIV/0!	0	#DIV/0!
Legal Services	0	#DIV/0!	0	#DIV/0!
Management of Companies & Enterprises	0	#DIV/0!	0	#DIV/0!
Administrative & Support & Waste Management & Remediation Services	0	#DIV/0!	0	#DIV/0!
Educational Services	0	#DIV/0!	0	#DIV/0!
Health Care & Social Assistance	0	#DIV/0!	0	#DIV/0!
Arts, Entertainment & Recreation	0	#DIV/0!	0	#DIV/0!
Accommodation & Food Services	0	#DIV/0!	0	#DIV/0!
Accommodation	0	#DIV/0!	0	#DIV/0!
Food Services & Drinking Places	0	#DIV/0!	0	#DIV/0!
Other Services (except Public Administration)	0	#DIV/0!	0	#DIV/0!
Automotive Repair & Maintenance	0	#DIV/0!	0	#DIV/0!
Public Administration	0	#DIV/0!	0	#DIV/0!
Unclassified Establishments	0	#DIV/0!	0	#DIV/0!
Total	0	#DIV/0!	0	#DIV/0!



Source: Business data provided by Infogroup, Omaha NE Copyright 2010, all rights reserved. Esri forecasts for 2010.



Business Summary by SIC Codes

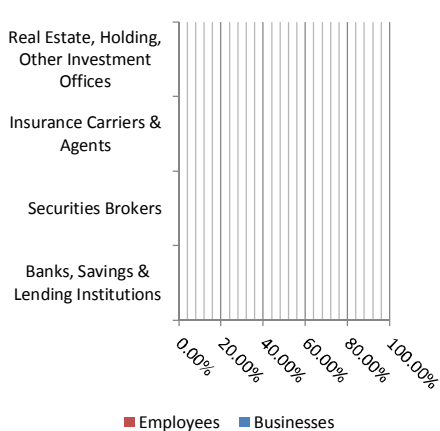
Eden, Yazoo County, Mississippi

Total Businesses	0			
Total Employees	0			
Total Residential Population	181			
Employee/Residential Population Ratio	0.00			
SIC Codes	Businesses		Employees	
	Number	Percent	Number	Percent
Agriculture & Mining	0	#DIV/0!	0	#DIV/0!
Construction	0	#DIV/0!	0	#DIV/0!
Manufacturing	0	#DIV/0!	0	#DIV/0!
Transportation	0	#DIV/0!	0	#DIV/0!
Communication	0	#DIV/0!	0	#DIV/0!
Utility	0	#DIV/0!	0	#DIV/0!
Wholesale Trade	0	#DIV/0!	0	#DIV/0!
Retail Trade Summary	0	#DIV/0!	0	#DIV/0!
Home Improvement	0	#DIV/0!	0	#DIV/0!
General Merchandise Stores	0	#DIV/0!	0	#DIV/0!
Food Stores	0	#DIV/0!	0	#DIV/0!
Auto Dealers, Gas Stations, Auto Aftermarket	0	#DIV/0!	0	#DIV/0!
Apparel & Accessory Stores	0	#DIV/0!	0	#DIV/0!
Furniture & Home Furnishings	0	#DIV/0!	0	#DIV/0!
Eating & Drinking Places	0	#DIV/0!	0	#DIV/0!
Miscellaneous Retail	0	#DIV/0!	0	#DIV/0!
Finance, Insurance, Real Estate Summary	0	#DIV/0!	0	#DIV/0!
Banks, Savings & Lending Institutions	0	#DIV/0!	0	#DIV/0!
Securities Brokers	0	#DIV/0!	0	#DIV/0!
Insurance Carriers & Agents	0	#DIV/0!	0	#DIV/0!
Real Estate, Holding, Other Investment Offices	0	#DIV/0!	0	#DIV/0!
Services Summary	0	#DIV/0!	0	#DIV/0!
Hotels & Lodging	0	#DIV/0!	0	#DIV/0!
Automotive Services	0	#DIV/0!	0	#DIV/0!
Motion Pictures & Amusements	0	#DIV/0!	0	#DIV/0!
Health Services	0	#DIV/0!	0	#DIV/0!
Legal Services	0	#DIV/0!	0	#DIV/0!
Education Institutions & Libraries	0	#DIV/0!	0	#DIV/0!
Other Services	0	#DIV/0!	0	#DIV/0!
Government	0	#DIV/0!	0	#DIV/0!
Other	0	#DIV/0!	0	#DIV/0!
Total	0	#DIV/0!	0	#DIV/0!

Retail Trade Summary



Finance, Insurance, Real Estate Summary



Services Summary

